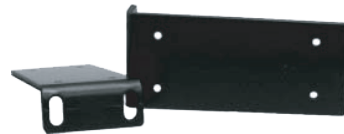




**ATLONA**  
Connecting technology to your world

# 4 x 4 Component Matrix Switcher with Stereo Audio

AT-COMP-44M



User Manual

## TABLE OF CONTENTS

1. Introduction	.....	1
2. Features	.....	1
3. Package Contents	.....	1
4. Specifications	.....	2
5. Panel Descriptions		
5.1 Front Panel	.....	2
5.2 Rear Panel	.....	3
6. Remote Control	.....	4
7. RS232	.....	5
9. Application	.....	6
10. Safety Information	.....	7
11. Warranty	.....	8
12. Atlona Product Registration	.....	9

## INTRODUCTION

Atlona Technologies' AT-COMP-44M is one of the most innovative Component Matrix switchers with Stereo Audio on the market. The AT-COMP-44M has 4 individual Component Video (RCA) inputs with Audio and 4 individual outputs. Because it is a matrix switch, any input can route to any output; and the same input can route to all outputs or any other combination. This unit is ideal for connecting sources including: (VCRs, Camcorders, Video Game Consoles, DVDs, Satellite Receivers, Set Top Boxes, etc.) to desired displays such as: (HDTV, LCDs, Plasma Monitors, Video Projectors, etc.) Selection of inputs can be achieved manually through the Front Panel, an Infrared Remote Control unit or RS232 control. Easily switch with flawless and crystal-clear distribution of all HDTV video formats up to 1080p as well as audio signals. With these attributes, the AT-COMP-44M is a great matrix switch capable of handling High Definition Television applications.

## FEATURES

- 4 inputs to 4 outputs Component Video (Matrix Switcher)
- Supported Signals:
  - Component Video: YPBPR
  - Digital: (PCM)
  - Audio : Stereo Audio (Audio Right/Audio Left)
- Support RS 232 interface
- Control Through IR remote control and Manually via Front Panel Buttons
- Video Bandwidth: 325MHz
- Resolutions: 480p, 576p, 720p, 1080i, 1080p
- Supports 50Hz or 60Hz ( PAL/NTSC )
- Included 19 inch Ear mounts
- Power supply DC12Volt, Universal Type Switch 100~230VAC, 50/60Hz

## PACKAGE CONTENTS

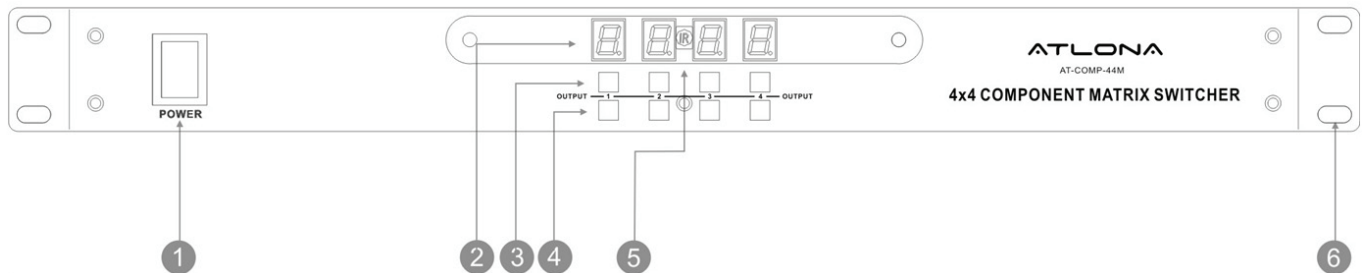
- AT-COMP-44M Matrix Switcher x 1.
- Instruction Manual x 1
- IR Remote Controller
- RS 232 Drive CD x 1
- Universal AC Adaptor : 12VDC
- 19in. Rack Mount ears ( pair ) x 1

## SPECIFICATIONS

Type of Switcher	4 input to 4 output, Component Video/Digital Audio Matrix Switch
I/O Signals	Component Video (YPBPR) 0.5~1.0Vpp, DDC 5Vpp, Digital Coaxial Audio, 1x RCA connector Stereo Audio, 2x RCA connectors (Red/white)
Video Bandwidth	325MHz (-3db), 200mVp-p
Video Supported	High Resolution formats 480i/p, 720p & 1080i/p
Audio Supported	Digital Audio (PCM) and Stereo Audio
Low all hostile crosstalk	-83 db@5MHz
Controls	IR remote, Select buttons on the front panel & RS232
PC RS232 Control	RS232 interface serial via DRV on a PC
Gain control	60MHz 0.1 db gain flatness
Safety Approvals	CE, FCC, RoHS(2002/95/EC)
Dimensions (LWH)	19" x 7.87" x 1.73"(482mm x 200mm x 44mm)
Power Supply	12V DC. Use Universal Switch Type 50/60Hz, 100~230 VAC
Shipping Weight	2.45 Kgs / 4.08 lb

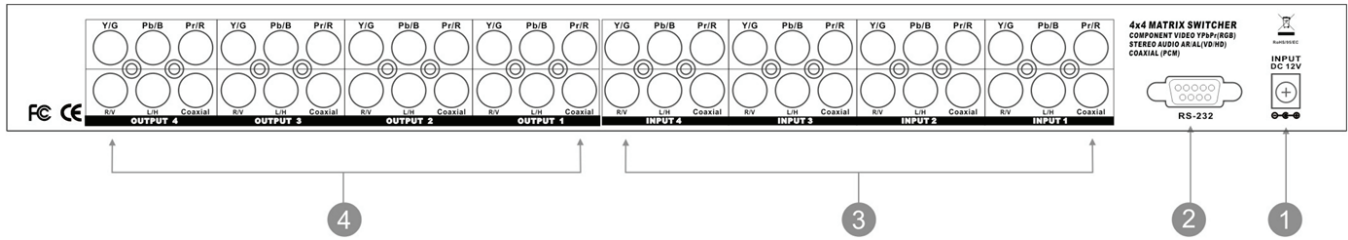
## PANEL DESCRIPTIONS

### 1. Front Panel

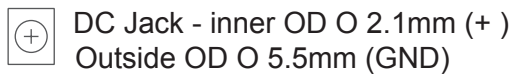


1. Power Switch: Powering Unit ON/OFF. The LED will illuminate red to indicate that the switcher is ON
2. Output LED Display: Displays Output in use with correspond Input. The LED will illuminate red to indicate that desired video source is present on that input.
3. & 4. Input Select Buttons: Push to select desired Inputs
5. IR Sensor. Receives IR commands from the remote controller
6. 19in Ear Rack Mounts

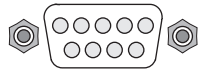
## 2. Rear Panel



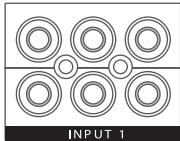
- 12V DC Power Input The AT-COMP-44M is fitted with a DC power plug- input park connector Power Jack:



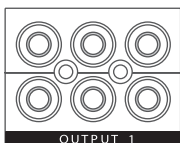
- RS 232 Connection. RS 232 control port allows for interfacing to a PC such as a computer or touch panel control, to the AT-COMP44M via DB-9pin Female connector for serial RS-232 control



- Inputs: 1-4 Component/Digital Audio.  
 Component Video (3xRCA's)  
 Digital Coaxial Audio (1x RCA connector)  
 Stereo Audio (2x RCA connectors)



- Outputs: 1-4 Component/Digital Audio.  
 Component Video (3x RCA's)  
 Digital Coaxial Audio (1x RCA connector)  
 Stereo Audio (2x RCA connectors)



## REMOTE CONTROL

Before making any connections to the AT-COMP-44M Observe the following:

Mains voltage supply must matches the label on the supplied plug-Pack (+/- 10%)

Power switch is OFF

All system grounds (earth) must be connected to a common point.

Avoid powering equipment within a system from multiple power sources that may be separated by large distances

Connect all audio video sources and destination equipment

Power up all sources

For each destination output select the appropriate input source by using the front panel input 1-4 select buttons, the supplied IR remote control or through the RS 232 serial communications port.

Upon power up, the switcher will return to its last used setting before powered down.

### 1. Power On or Off

Controller with a separate power to turn ON and OFF

### 2. Outputs 1- 4: Output to desired displays

Output -1: TV-1 Component Video (YPBPR) HDTV Display

Output -2: TV-2 Component Video (YPBPR) HDTV Display

Output -3: TV-3 Component Video (YPBPR) HDTV Display

Output -4: TV-4 Component Video (YPBPR) HDTV Display

### 3. Inputs 1-4: Input Video Source Selections

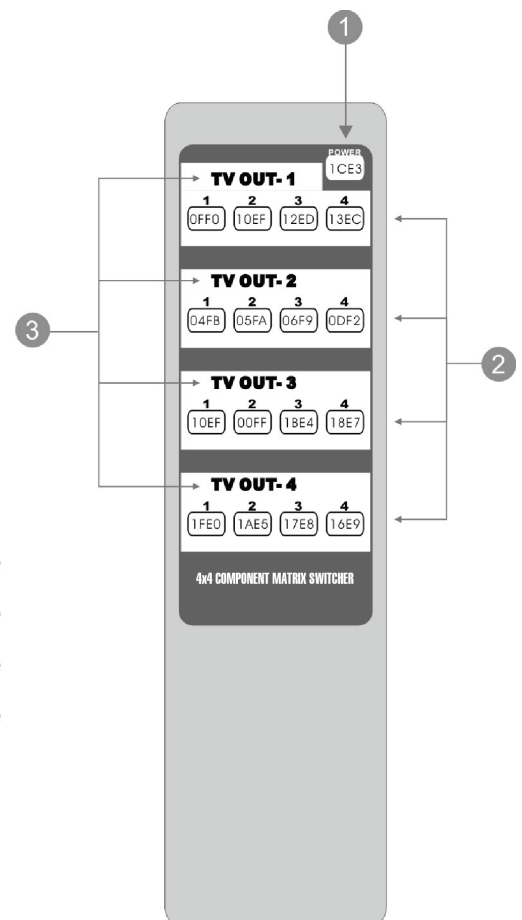
Input -1: AV-1 Component Video (YPBPR) Signal source device

Input -2: AV-2 Component Video (YPBPR) Signal source device

Input -3: AV-3 Component Video (YPBPR) Signal source device

Input -4: AV-4 Component Video (YPBPR) Signal source device

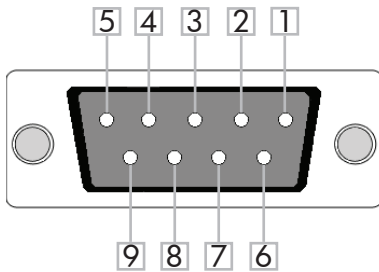
Series Code: 24 DB



## RS-232

### Connection

RS-232 is connected through a 9-pin female D connector. The pins will have functions associated with them, some will be unassigned.



No.	Pin	Function
1	----	Not used
2	Tx	Transmit
3	Rx	Receive
4	----	Not used
5	Gnd	Ground
6	----	Not used
7	----	Not used
8	----	Not used
9	----	Not used

Baud Rate: 9600bps

Data Bit: 8bits

Parity: None

Stop Bit: 1bit

### Command

The command codes are very sensitive, do not change capitalization, spacing, or lettering.

Command	Feedback	Description
PWON	PWON	Power on
PWOFF	PWOFF	Power off
All#	All#	Resets all inputs to corresponding outputs (in3 to out3)
x1\$	x1\$	Turns off output channel (to turn off output 3 = x3\$)
x1AVx2	x1AVx2	Switch input to output (input 3 to output 5 = x3AVx5)
x1AVx2,x3,x4	x1AVx2,x3,x4	Switch input to multiple outputs (input 3 = x3AVx1,x2)
Statusx1	x7AVx1	Shows what input is connected to selected output
Status	x1AVx1, x2AVx2, x3AVx4, ....	Displays which inputs are currently connected to which outputs
Save[Y]	Save2	Saves settings for future use, saves vary from 0 to 9
Recall[Y]	Recall2	Pulls up saved settings for the number you selected
Clear[Y]	Clear2	Erases the save for the number you selected
Mreset	Mreset	Sets matrix back to the default settings

Each command or feedback is terminated with a carriage return.

**Note: If the command fails or is incorrect the feedback should be "Command FAILED"**

## APPLICATION





## Safety Information

### Safeguards



To reduce the risk of electric shock, do not expose this product to rain or moisture



If the wall plug does not fit into your local power socket, hire an electrician to replace your obsolete socket.



Do not modify the wall plug. Doing so will void the warranty and safety features.



This equipment should be installed near the socket outlet and the device should be easily accessible in the case it requires disconnection.

### Precautions

FCC regulations state that any unauthorized changes or modifications to this equipment, not expressly approved by the manufacturer, could void the user's authority to operate this equipment.

Operate this product using only the included external power supply. Use of other power supplies could impair performance, damage the product, or cause fires.

In the event of an electrostatic discharge this device may automatically turn off. If this occurs, unplug the device and plug it back in.

Protect and route power cords so they will not be stepped on or pinched by anything placed on or against them. Be especially careful of plug-ins or cord exit points from this product.

Avoid excessive humidity, sudden temperature changes or temperature extremes.

Keep this product away from wet locations such as bathtubs, sinks, laundries, wet basements, fish tanks, and swimming pools.

Use only accessories recommended by Atlona to avoid fire, shock, or other hazards.

Unplug the product before cleaning. Use a damp cloth for cleaning and not cleaning fluid or aerosols. Such products could enter the unit and cause damage, fire, or electric shock. Some substances may also mar the finish of the product.

Never open, remove unit panels, or make any adjustments not described in this manual. Attempting to do so could expose you to dangerous electrical shock or other hazards. It may also cause damage to your AT-COMP-44M. Opening the product will void the warranty.

Do not attempt to service the unit. Disconnect the product and contact your authorized Atlona reseller or contact Atlona directly.

## Warranty

### Limited Warranty

Atlona Technologies warrants that (a) its products (the AT-COMP-44M) will perform substantially in accordance with the accompanying written materials for a period of 3 years from the date of receipt and (b) that the product will be free from defects in materials and workmanship under normal use and service for a period of 3 years. In the event applicable law imposes any implied warranties, the implied warranty period is limited to 3 years from the date of receipt. Some jurisdictions do not allow such limitations on duration of an implied warranty, so the above limitation may not apply to customers that fall within those areas.

### Customer Remedies

Atlona Technologies' and its suppliers' entire liability and Customer's exclusive remedy shall be, at Atlona Technologies' decision, either return of the price paid for the product, repair, or replacement of the product that does not meet this Limited Warranty and which is returned to Atlona Technologies with a copy of the Customer's receipt. This Limited Warranty is void if failure of the product has resulted from accident, abuse, misapplication, or natural occurrence. In example but not limited to: power surges (electrical storms, local power outage), dropping the product (or items on the product), contact with fluids, and physical misconduct (i.e. kicking or punching). Any replacement product will be warranted for the remainder of the original warranty period.

### No other warranties

To the maximum extent permitted by applicable law, Atlona Technologies and its suppliers disclaim all other warranties, either expressed or implied, including, but not limited to, implied warranties of merchantability and fitness for a particular purpose, with regard to the product and any related written materials. This Limited Warranty gives customer specific legal rights. Customers may have other rights depending on the jurisdiction.

### No liability for damages

To the maximum extent permitted by applicable law, in no event shall Atlona Technologies or its suppliers be liable for any damages arising out of the use of or inability to use this product, even if Atlona Technologies has been advised of the possibility of such damages. Such damages include but are not limited to: special, incidental, consequential, or indirect damages for personal injury, loss of business profits, business interruption, loss of business information, or any other pecuniary loss. Atlona Technologies' and its suppliers' entire liability under any provision of this agreement shall be limited to the amount actually paid by you for the product. Some Jurisdictions do not allow the exclusion or limitation of liability for consequential or incidental damage. The above limitations may not apply to you in such jurisdictional cases.

## Atlona Product Registration

Thank you for purchasing this Atlona product. - We hope you enjoy it and will take an extra few moments to register your new purchase.

Registration creates an ownership record if your product is lost or stolen and helps ensure you'll receive notification of performance issues and firmware updates.

At Atlona, we respect and protect your privacy, assuring you that your registration information is completely secure. Atlona product registration is completely voluntary and failure to register will not diminish your limited warranty rights.

To register go to: <http://www.atlona.com/registration>